

noodle

RFID SMART BADGES

In Partnership With





Make more of your
delegate badges
with RFID

How does RFID technology work?

The good news is that the acronym is the scariest part – our RFID smart badges contain the same chip as your contactless bank card and are linked to attendees name badges on arrival so they can use the badge at physical touch points to streamline common actions and enhance their event experience.

Setting up your attendees with RFID smart badges or wristbands couldn't be easier with our super slick arrival process. Each badge takes only 15-20 seconds to print and encode before your attendees are ready to use their badge to streamline their event experience. Think barcodes, but way better.



**Upload
attendee list**



**Link badge
or wristband
on arrival**



**Tap badge at
touch points**



**View real-time
reporting**

5
seconds



Search by attendee
name or QR code to view
badge type & colour



10
seconds



Tap badge to link to
attendee and print
personalised badge



20
seconds



Apply personalisation &
tap to check in attendee
for real time reporting



Staffed badging stations



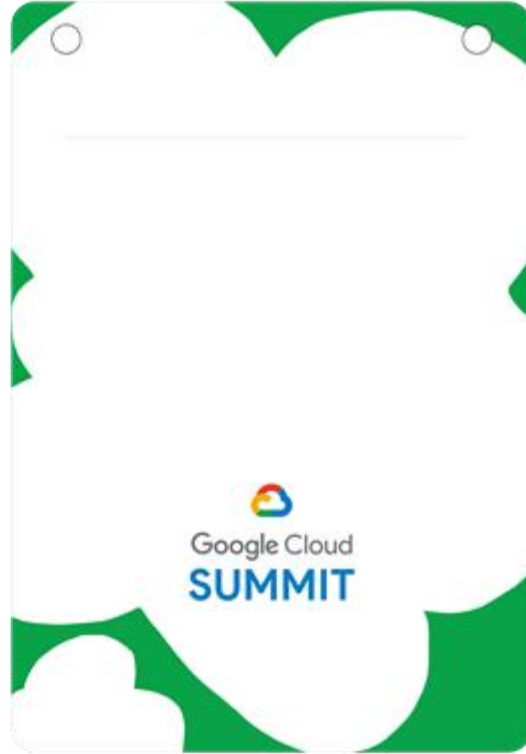
Self print contactless stations



White Label
Personalisation



Direct Print
Personalisation



Clear Label
Personalisation



Wristbands

What can your RFID touch points do?

Take your delegate name badges to the next level at your next conference, exhibition or event with our unique combination of RFID smart badges and touch points. Our touch points can be used to streamline and enhance every step of the attendee journey whilst also collecting lots of lovely data along the way.



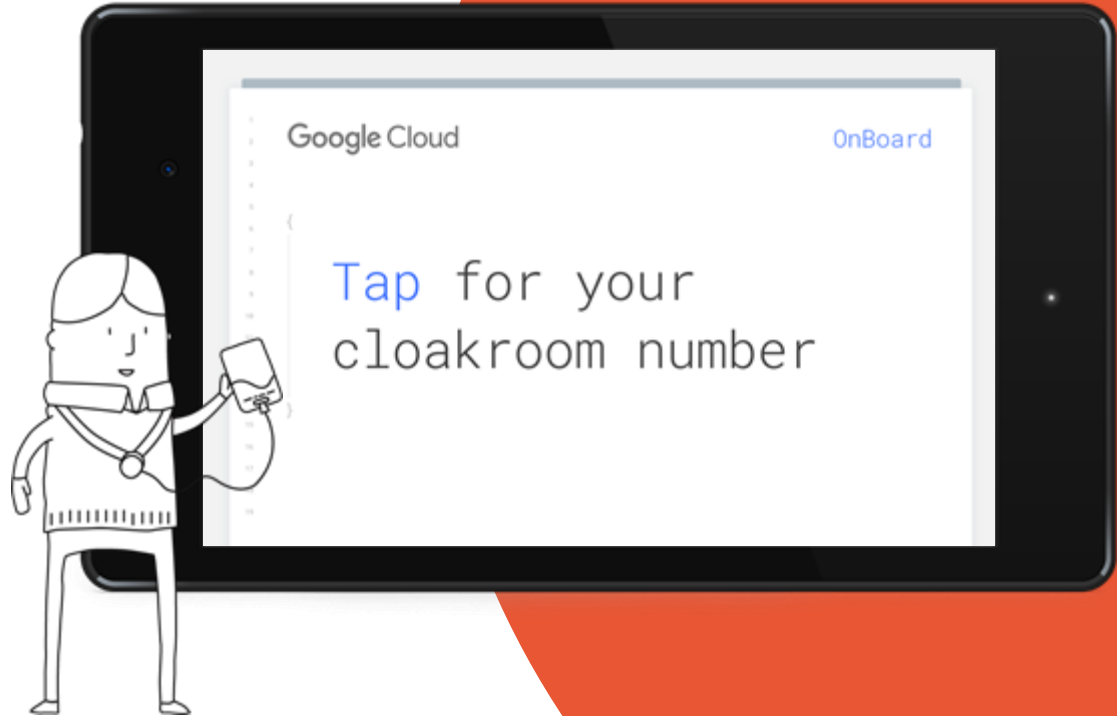
Event check in

Track event attendance effortlessly with personalised greetings and real time arrival data.



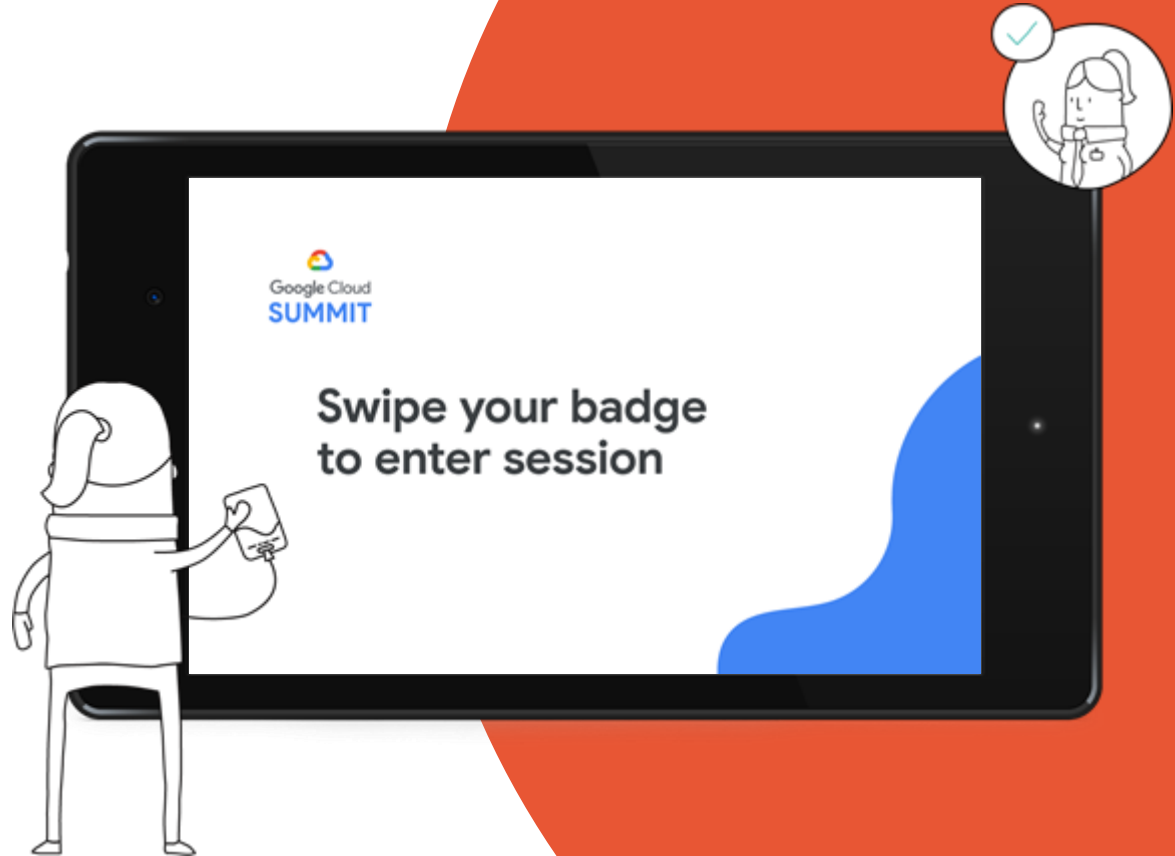
Cloakroom

Remove the need for cloakroom tickets with the simple tap of a badge to check in coats and bags.



Session check in

Collect valuable data by tracking session attendance and manage individual room capacity to ensure compliance with Crowd Density Standards. .



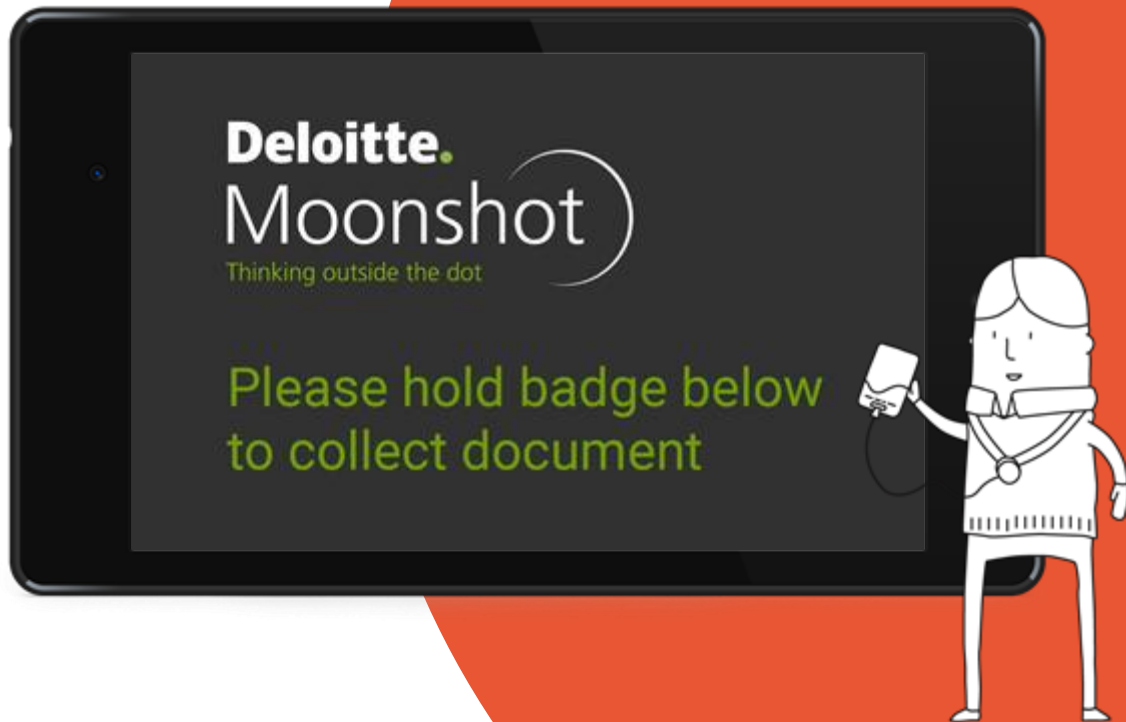
Access control

Control entry to pre-booked sessions or VIP areas by displaying access level.



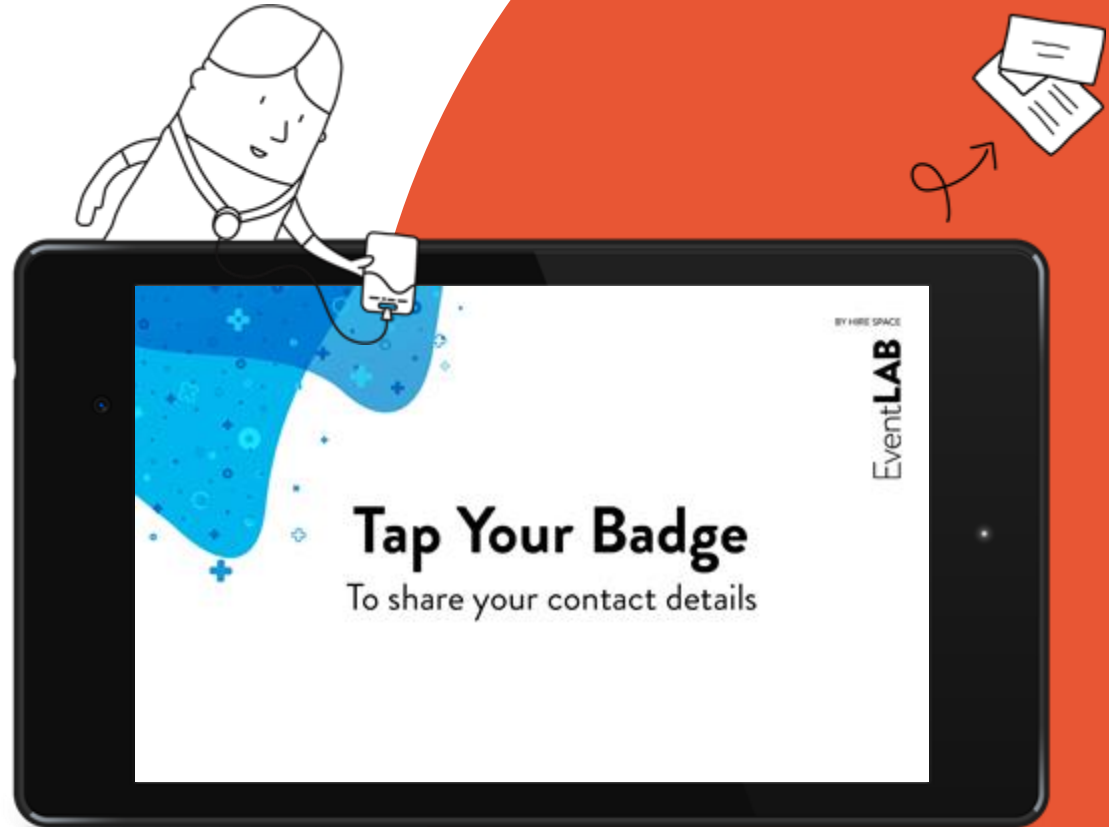
Content collection

Instantly share content that can be delivered to your attendees inbox when they swipe.



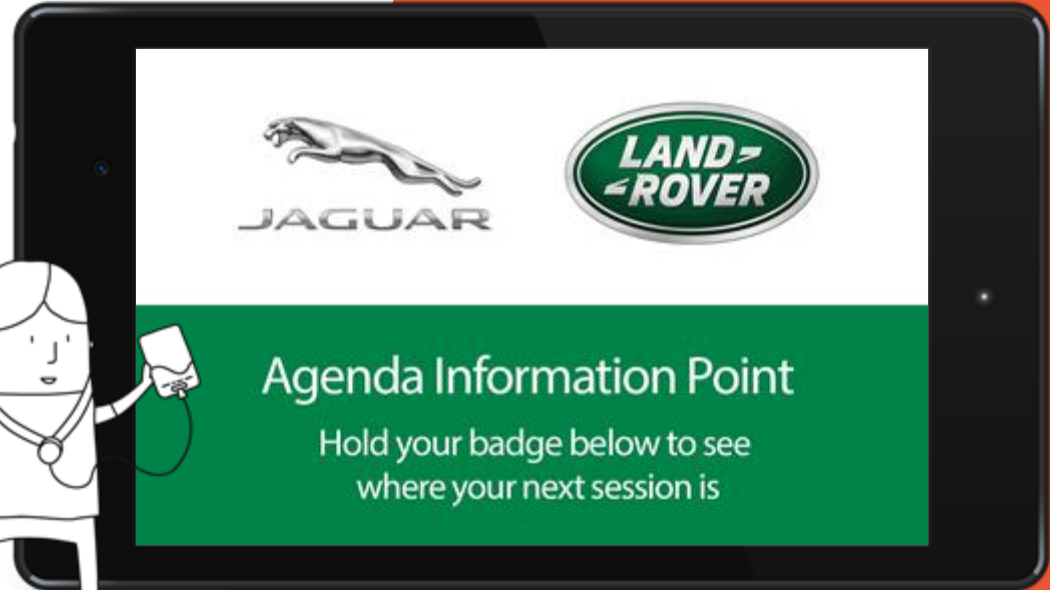
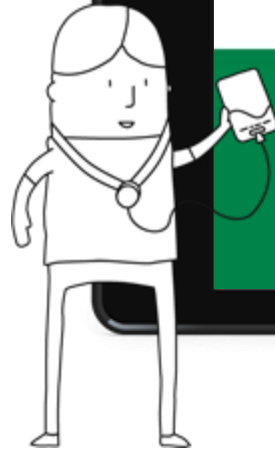
Lead capture

Make it easy to capture contacts with the option to add notes, assign priority or send documents to prospects by adding our lead capture upgrades.



Personalised information

Create a personalised event experience by displaying personalised details like agenda information on the screen.



Competitions

Tap to enter competitions with the result instantly displayed on the screen.



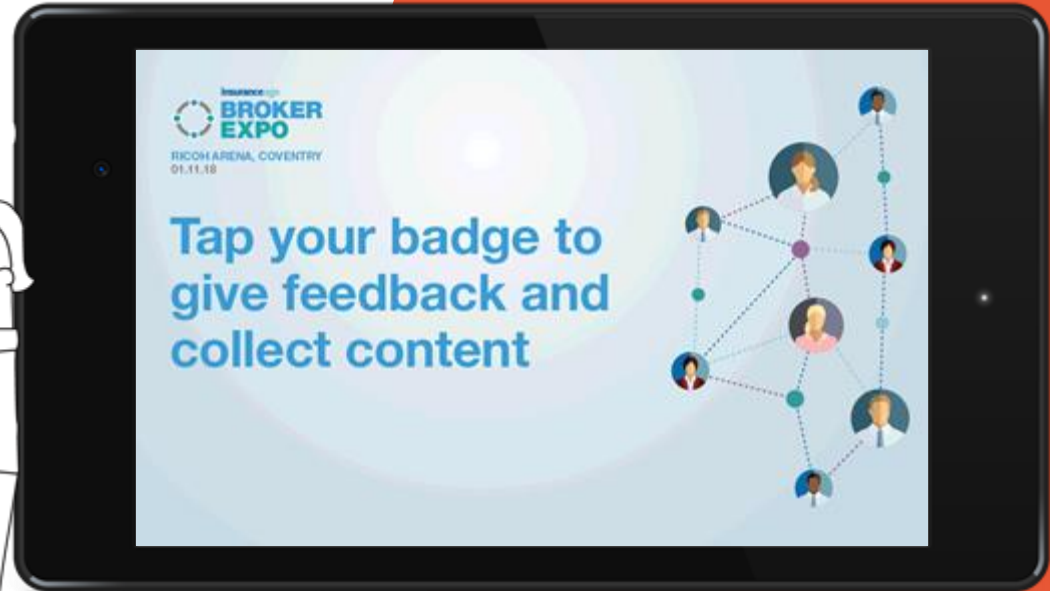
Table numbers

Streamline arrivals by displaying real time table numbers and never print a table plan again.



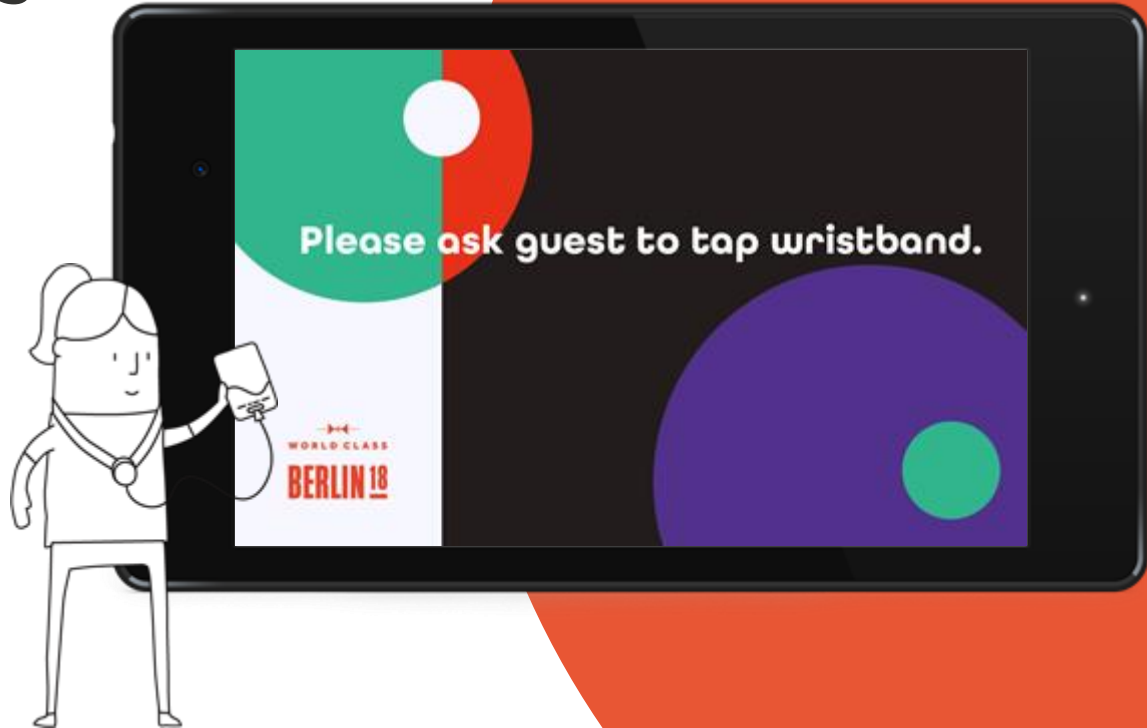
Feedback collection

Gather feedback with our on-screen surveys for an instant temperature test.



Food & Drink Tokens

Control catering spend using food and drink token points with the option to purchase further tokens



We've worked
with some of
the best...



worldpay

De Beers

Google

The Telegraph

GAME

Deloitte.

DIAGEO



Genesys®



Reed
Exhibitions

Marriott®
HOTELS & RESORTS

FUJITSU

543,907

Event interactions captured in 2019

What do your RFID touch points look like?



Floor stand

Perfect for: Document Collect



Staff stand

Perfect for: Cloakroom



Triangle stand

Perfect for: Event Check In



Handheld tablet

Perfect for: Lead Capture

Better than barcode scanners



Screen based readers

All of our touch points have digital screens which offer a multitude of opportunities for digital branding and attendee experience personalisation



Wider functionality

Our touch points offer far more fun than just data capture, meaning we're adding to the attendee experience whilst also capturing lots of juicy data



Real time data syncing

No need to sync up the data at the end of the event, our touch points send data back in real time to our dashboard



Faster scanning

Our scanners are faster than barcode or QR code scanners

Exhibitors and sponsors

The most important stakeholders at almost every event. We've thought long and hard about how to leverage the power of RFID to make life easier for your exhibitors and sponsors.

Our lead retrieval scanners make it simple to capture contact details and generate maximum ROI as a result of having a presence at your event. Our screen based scanners allow exhibitors and sponsors to add extra detail to every lead and facilitate instant follow up, creating rich data sets for exhibitors and sponsors.

We like to think we've taken lead retrieval scanners to the next level with a stack of extra features by making use of the scanner screens to create extra value for your stakeholders.



Exhibitor features

You can supercharge your lead capture scanners with upgrades to offer even more value.

Interested in upselling your exhibitors or sponsors? We can provide you with a ready to use exhibitor sales pack. Your event tech consultant can discuss the best ways to maximise revenue from exhibitor sales and neutralise the overall cost to you as the organiser



Custom screen graphics

A great digital branding opportunity



Floor stand rental

Create a passive contact capture point with our floor stands





Lead notes

Summarise your conversation to tailor your follow up



Document collect

Instantly follow up via email with the right documents



Email send

Instantly send a follow up email to your prospects



Lead grading

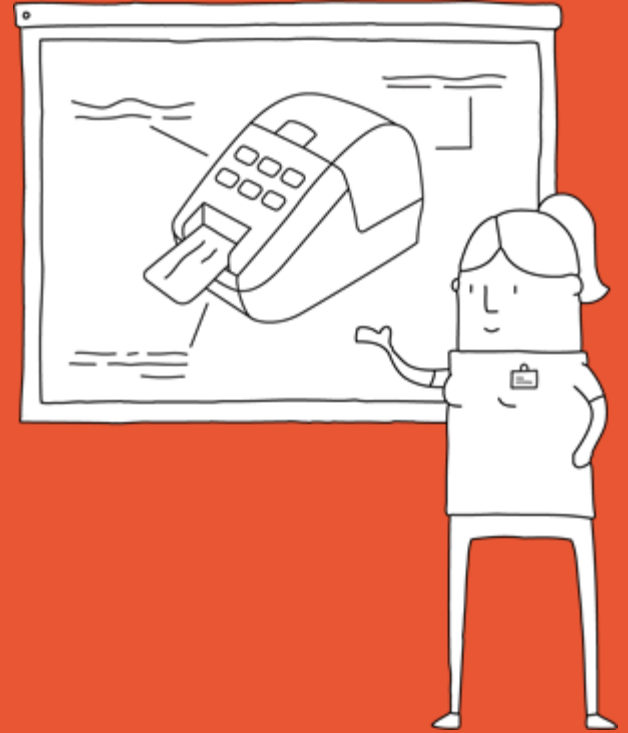
Use the swipe point screen to add a priority tag to a contact

Full control with our RFID dashboard

You will be provided with access to our RFID dashboard so that you have all the tools you need to set up our RFID system for use at your event.

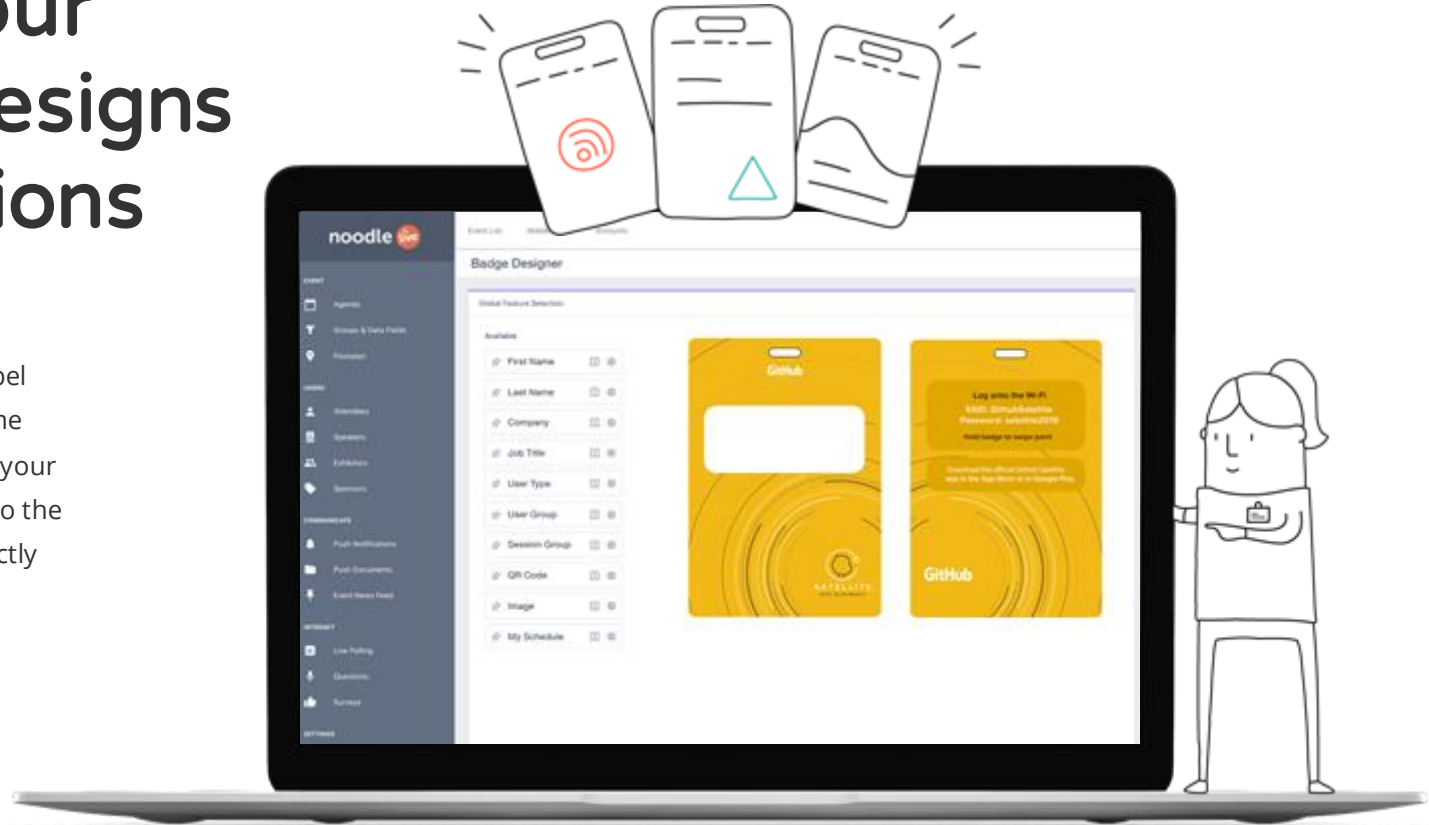
It couldn't be easier to make changes whenever you need, day or night. You can access the dashboard via any modern browser.

The Noodle team will provide access to a full user guide along with a full training session to get you off the blocks.



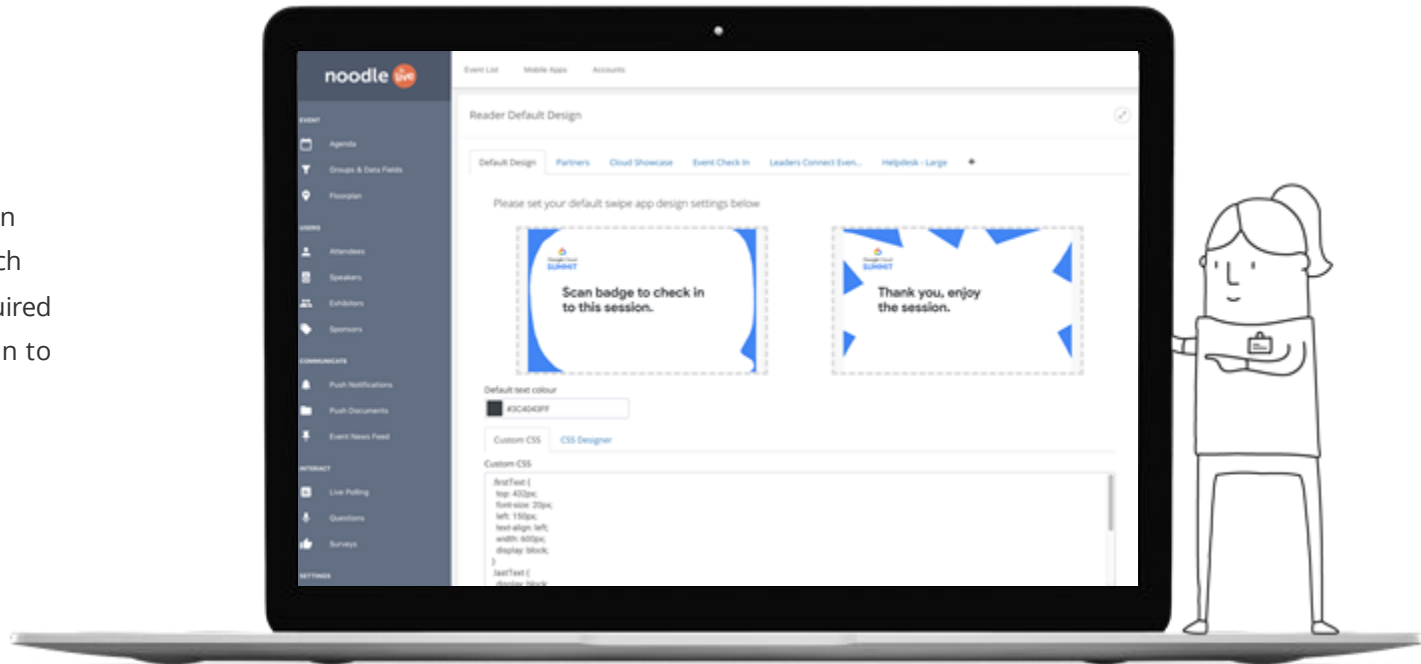
Setup your badge designs and stations

Upload your badge and label designs then using the same dashboard you can set up your badging station interface so the on-site experience is perfectly suited to your needs!



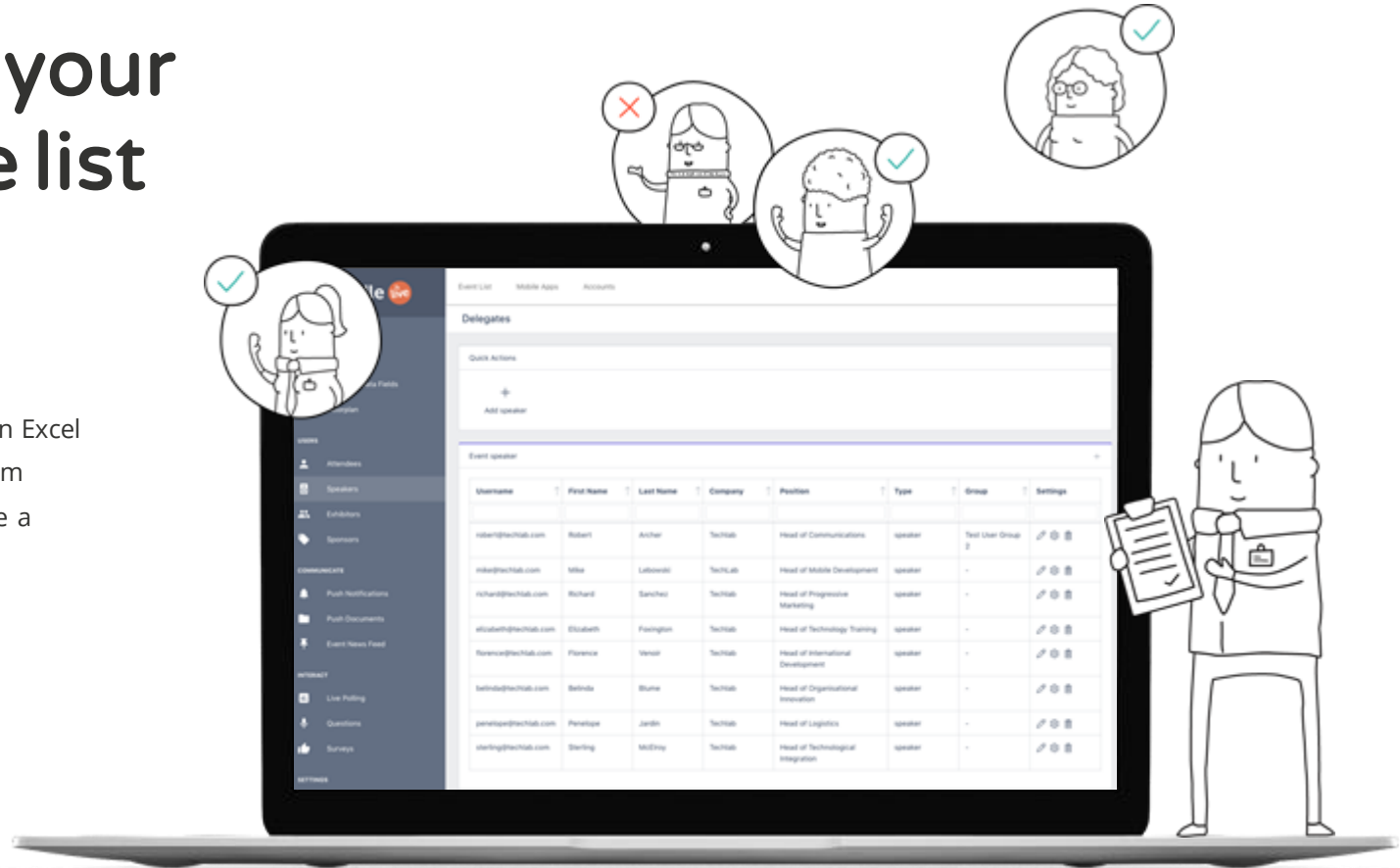
Setup RFID touchpoints

Upload fully branded screen graphics for your RFID touchpoints and select your required functionality with the option to instantly update as needed



Manage your attendee list

Upload your attendee list in Excel format with as many custom fields as you need to create a super juicy data set.



View real-time analytics

See all your event activity in real time using our data dashboard so you can see exactly what's going on in any area of your event at any time.





How does the
process work?

Pre event

1

Project timeline

We'll kick off the project with a detailed project plan which details everything you need to do to ensure the smooth delivery of your event using our tech.

2

Badge design

It's easy to upload your badge designs and send your order to our badging partner using our dashboard - they will then ship them straight to your venue or office.

3

Venue site visit

We will give you a handy checklist to work through during your site visit to help you identify registration flow, attendee movements and equipment positioning.

4

Network check

Running through our tried and tested network checklist with your venue of choice is essential so they can provide the right advice on the best network setup.

5

Touch point content

We'll provide you with suggestions and templates for the screen graphics for our touch points and a checklist of any other content required.

6

Equipment ordering

Use our handy registration wizard to identify your equipment requirements then place your order with our hardware partner who will ship direct to your office or venue.

7

Attendee data

You can upload your attendee data in CSV format, keeping the same data structure - we don't need to upload this until the night before your event with the option to add new attendees on the day as needed.



On site

8

Dedicated on site team

We can provide a dedicated on site team based on your requirements who have extensive experience delivering event technology to work with your own team to ensure a smooth delivery.

9

Registration setup

All our registration hardware is plug and play - our hardware partner will ensure our badging programme is pre-installed so all you have to do is login using your credentials.

10

Touch point setup

Our hardware partner will pre-install our scanning app on your hardware so all you need to do is login, select touch point function and test!



Post event

**11**

Event reporting

You will have access to real time reporting via our dashboard with a selection of graphs to visualise your event activity - you can also download detailed reports for each touch point in Excel format

12

Exhibitor data distribution

If you are providing data to your exhibitors or sponsors, you can send this out to all your partners with a single click from our dashboard.



How does pricing work?

It's quite simple really

You'll get access to the whole Noodle Live platform as part of your RFID smart badge license

Order your hardware and badge stock to be delivered straight to your venue from our delivery partner

Badge designer	✓
Badge hardware setup	✓
On site badge printing	✓
Event attendance reporting	✓
Unlimited session scanning	✓
Unlimited exhibitor lead capture	✓
Advanced event reporting	✓
Full feature event app	✓
Virtual event platform	✓
Attendee credits	10,000

What's included?

A fully branded event app and virtual event platform...

Create as many apps as you need - all submitted to iOS and Android with a supporting desktop web app.

An easy to use on site system...

Download our badge printing, session scanning and lead capture apps in seconds ready to use

Access to the Noodle Live dashboard...

This is where you can manage your app content and communications.

On-going support...

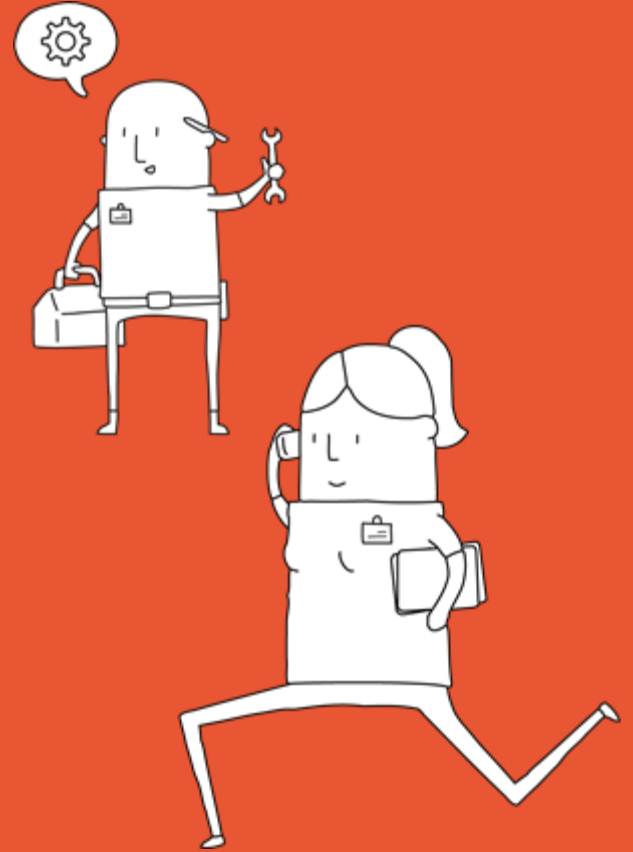
Noodle Live's super helpful team can guide you through the whole process with a dedicated account manager



Worried about workload and expertise?

We're happy to take the reins on all aspects of the project. Just opt for one of our dedicated project management packages.

If needed, we can also offer on-site support. Our expert team can help you plan registration flow, setup your registration & RFID equipment, train on site staff and coordinate on site requirements.





About us



Noodle Live is an event technology company

Sorry if you were expecting food...

We provide technology solutions to the organisers of conferences, trade shows and exhibitions.

Our products allow you to improve the attendee event experience whilst capturing valuable data around event activity making it easy to quantify event ROI in the same way as other marketing channels.

But don't just take our word for it...



“

I personally enjoy every moment working with the Noodle team. Whatever we throw at them in terms of last minute changes and additions they are able to handle, continually coming up with solutions and made delivering a European tour as smooth as possible

Charlotte West

Delegate Experience & Registration Manager

Wonder London

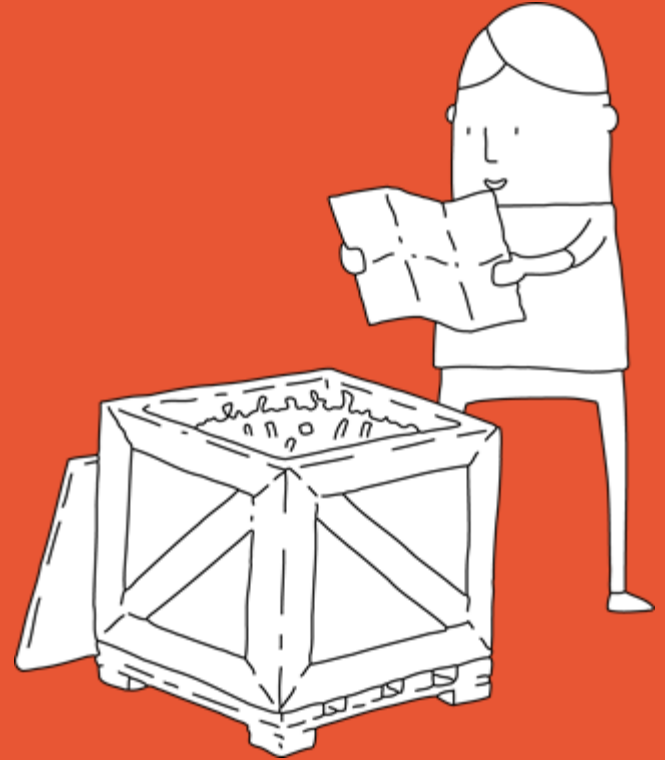
Approach

Our goal is to provide the tools event planners need to create a great attendee experience whilst also streamlining common processes, serving key stakeholders and collecting the necessary data to demonstrate event ROI.

Unlike other event tech companies, we bring more than just great software to the table – we also bring buckets of live event experience gleaned from 8+ years delivering our own tech with global support from our hand picked hardware and staffing partners.

We work on events of all sizes, ranging from intimate product launches with 75 attendees right up to large customer events with 13,000 attendees.

So no matter where your event is, we've got you covered!





Seamless attendee experience

We understand the importance of creating a slick attendee experience and this is reflected in our product



Simple setup

Our intuitive dashboard is easy to use and we've got a suite of tools baked in to cut out the tedious admin



Team training

We give you all the training and materials you need to successfully deploy our tech.



Flexible support

We offer the right support – from pre-event pointers to on-site teams.



Real-time data

We make sense of all the data and present it in a format that works for you.



Revenue generation

We work with you to look for ways to generate revenue from using our tech.



Delivery partner network

We work with select partners for provision of hardware, on-site staff and consumables for your events



Flexible pricing

We charge a simple monthly fee based on which products you need and how much you use



Please consider the environment before printing this - we like to keep it digital and make the planet happy.

