

# noodle

BADGE PRINTING

In Partnership With





---

Wave goodbye to  
queues with super  
fast badge printing

# How does your on-site registration work?

We're proud as punch of our print on demand badging software – we know we can print beautiful, personalised badges in just 15-20 seconds meaning you can wave goodbye to those hated registration queues.

Our badge printing software is the slickest solution out there – you won't find a faster way to print beautiful conference and event badges.



5  
seconds



Search by attendee  
name or QR code to view  
badge type & colour

10  
seconds



Click attendee record to  
print personalised  
name badge

20  
seconds



Apply personalisation -  
attendee marked as  
attended for reporting



Staffed badging stations



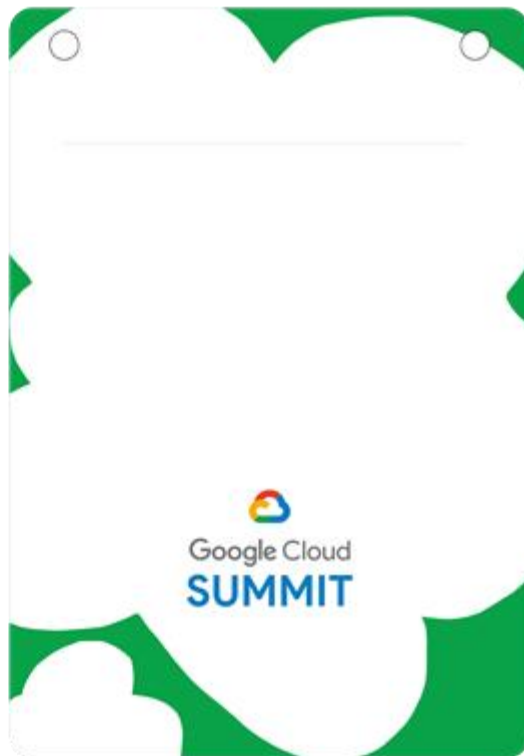
Self print contactless stations



White Label  
Personalisation



Direct Print  
Personalisation



Clear Label  
Personalisation



Wristbands

We've printed  
badges for some  
of the best!



De Beers



The Telegraph

GAME

Deloitte.

DIAGEO



# 142,376

---

Badges printed in 2019



# Full control with our badge printing dashboard

You will be provided with access to our badging dashboard so that you have all the tools you need to set up our badging system for use at your event.

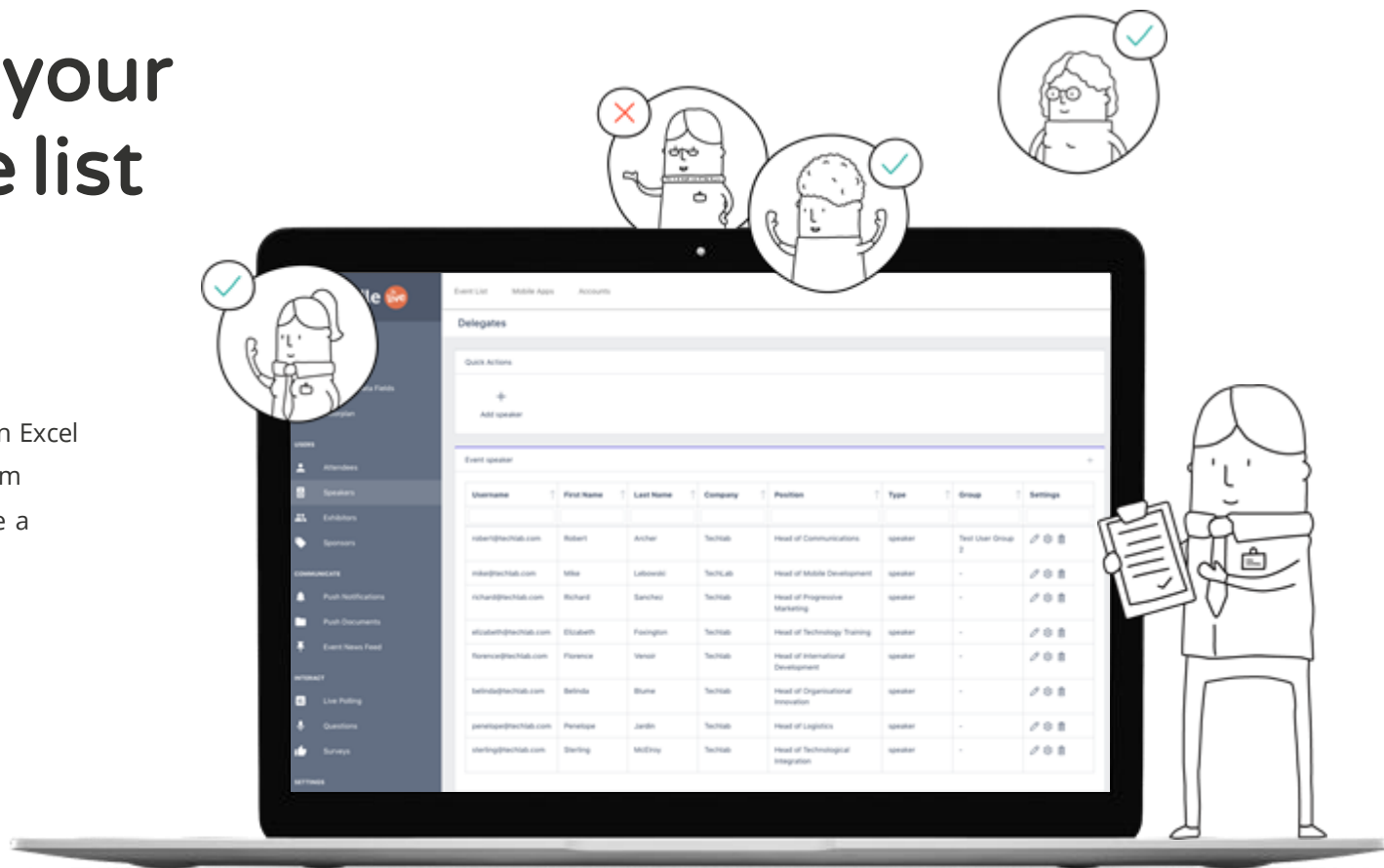
It couldn't be easier to make changes whenever you need, day or night. You can access the dashboard via any modern browser.

The Noodle team will provide access to a full user guide along with a full training session to get you off the blocks.



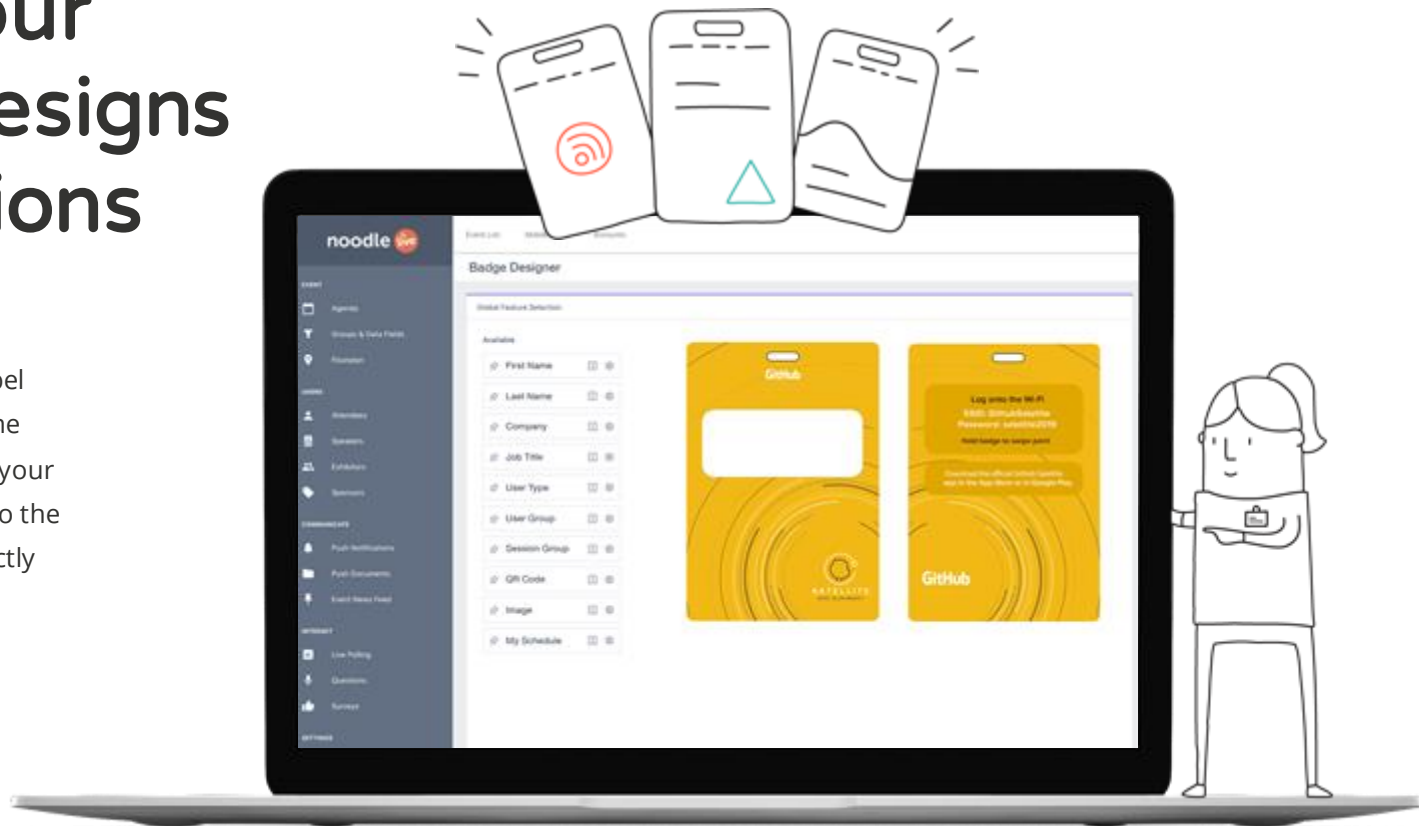
# Manage your attendee list

Upload your attendee list in Excel format with as many custom fields as you need to create a super juicy data set.



# Setup your badge designs and stations

Upload your badge and label designs then using the same dashboard you can set up your badging station interface so the on-site experience is perfectly suited to your needs!



# View real-time analytics

See all your event activity in real time using our data dashboard so you can see exactly what's going on in any area of your event at any time.



# What hardware do I need for your badge printing system?

Our on-site registration system requires minimal hardware, making it quick and easy for you to set up and get on your way. Our hardware partner will setup your hardware on your behalf and ship it out to you with spares but you can also choose to use your own equipment if you would like.



## Laptop computer

Must run Chrome web browser



## Label or badge printer

Our hardware partner will recommend a suitable printer



## Hardwire connection

Preferred but not essential



---

# How does the process work?

# Pre event



1

## Project timeline

We'll kick off the project with a detailed project plan which details everything you need to do to ensure the smooth delivery of your event using our tech.

4

## Network check

Running through our tried and tested network checklist with your venue of choice is essential so they can provide the right advice on the best network setup.

2

## Badge design

It's easy to upload your badge designs and send your order to our badging partner using our dashboard - they will then ship them straight to your venue or office.

5

## Equipment ordering

Use our handy registration wizard to identify your equipment requirements then place your order with our hardware partner who will ship direct to your office or venue.

3

## Venue site visit

We will give you a handy checklist to work through during your site visit to help you identify registration flow, attendee movements and equipment positioning.

6

## Attendee data

You can upload your attendee data in CSV format, keeping the same data structure - we don't need to upload this until the night before your event with the option to add new attendees on the day as needed.

# On site

7

## Dedicated on site team

We can provide a dedicated on site team based on your requirements who have extensive experience delivering event technology to work with your own team to ensure a smooth delivery.

8

## Registration setup

All our registration hardware is plug and play so it makes registration setup a breeze - our hardware partner will ensuring our badging programme is pre-installed so all you have to do is login using your credentials.





# Post event



## 9

### Event reporting

You will have access to real time reporting via our dashboard with a selection of graphs to visualise your event activity - you can also download detailed attendance reports in Excel format



---

# How does pricing work?

We know that every event is different so that's why our costs are always broken down into the following sections, giving you an event tech 'shopping list' to pick and choose from:

# Bronze, Silver or Platinum

|                            | Bronze | Silver | Platinum |
|----------------------------|--------|--------|----------|
| Badge designer             | ✓      | ✓      | ✓        |
| Badge hardware setup       | ✓      | ✓      | ✓        |
| On site badge printing     | ✓      | ✓      | ✓        |
| Event attendance reporting | ✓      | ✓      | ✓        |
| Attendee credits           | 1,000  | 2,000  | 5,000    |

We offer three levels of on site registration software based on attendee numbers

Order your hardware and badge stock to be delivered straight to your venue from our delivery partner

# What's included?

Our badging packages gives you unlimited access for 12 months:

## Access to the Noodle Live dashboard...

Set up everything you need to run a super smooth registration with a one stop portal for badge designs, hardware setup and reporting

## An easy to use on site system...

Download our badge printing app in seconds ready to print professional event badges for your attendees

## On-going support...

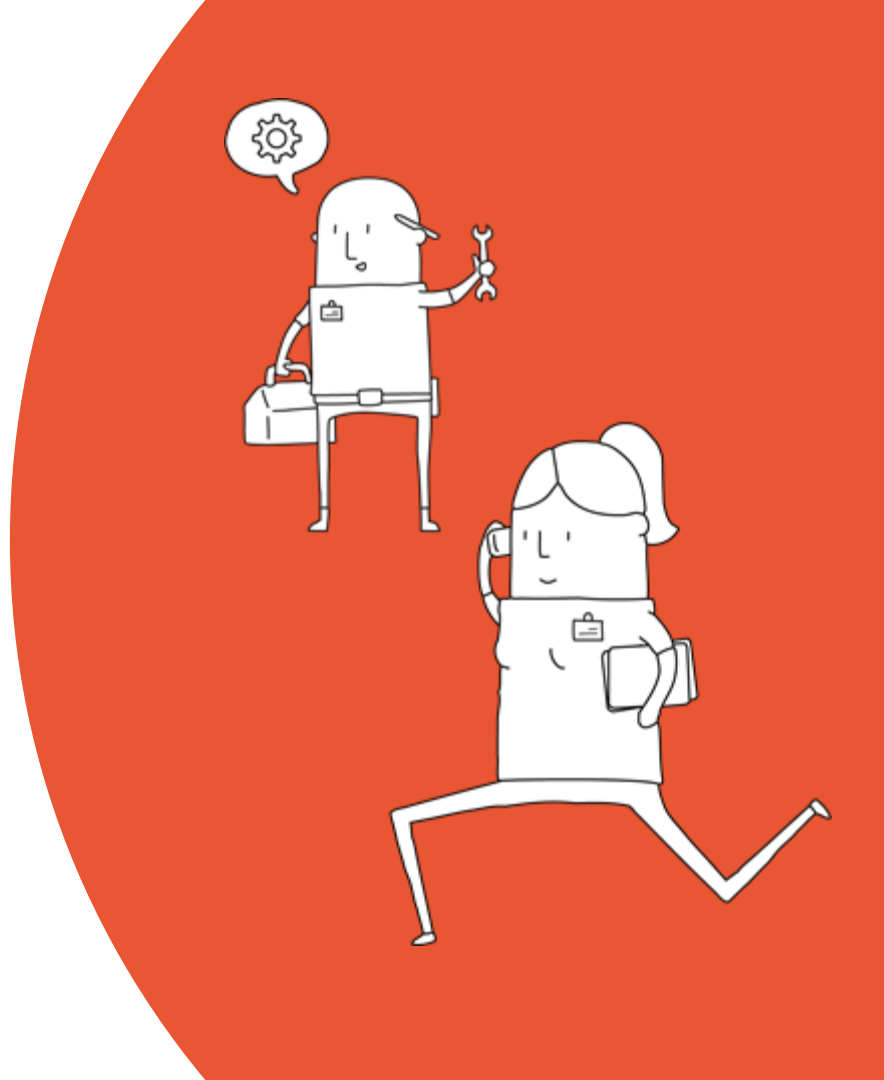
Noodle Live's super helpful customer success team can guide you through the on site registration process



# Worried about workload and expertise?

We're happy to take the reins on all aspects of the project. Just opt for one of our dedicated project management packages.

If needed, we can also offer on-site support. Our expert team can help you plan registration flow, setup your registration equipment and train on site staff.





---

# About us



# Noodle Live is an event technology company

Sorry if you were expecting food...

We provide technology solutions to the organisers of conferences, trade shows and exhibitions.

Our products allow you to improve the attendee event experience whilst capturing valuable data around event activity making it easy to quantify event ROI in the same way as other marketing channels.

But don't just take our word for it...



“

We love working with Noodle, they listened to our needs and adapted services and their quotation accordingly. On site, the team was friendly and helpful and I particularly liked the set-up of the WhatsApp group, keeping everyone in touch with each other. The post-show reports were really helpful and gave us a clear picture of attendance and walk-in registrations.

---

**Trudi Wagner**

Senior Event Manager

Marriott Hotels & Resorts



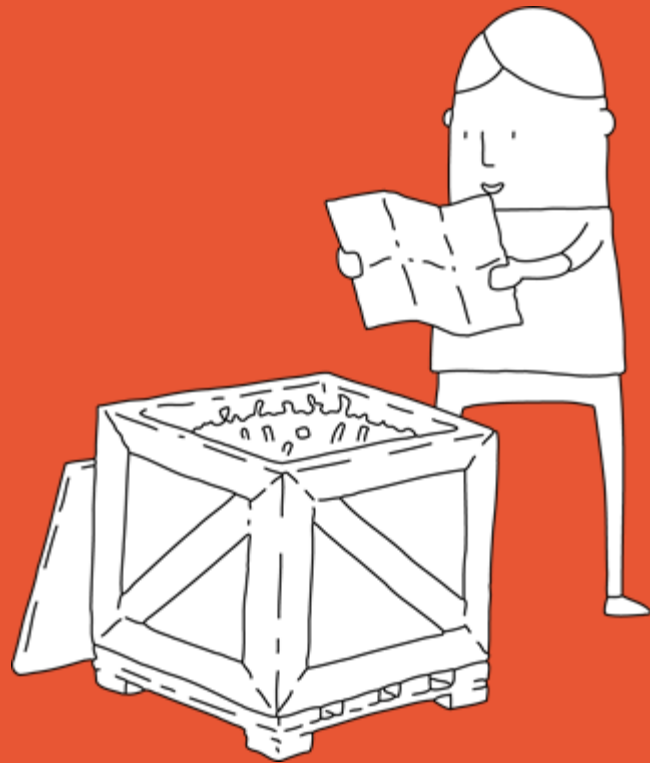
# Approach

Our goal is to provide the tools event planners need to create a great attendee experience whilst also streamlining common processes, serving key stakeholders and collecting the necessary data to demonstrate event ROI.

Unlike other event tech companies, we bring more than just great software to the table – we also bring buckets of live event experience gleaned from 8+ years delivering our own tech with global support from our hand picked hardware and staffing partners.

We work on events of all sizes, ranging from intimate product launches with 75 attendees right up to large customer events with 13,000 attendees.

So no matter where your event is, we've got you covered!





### Seamless attendee experience

We understand the importance of creating a slick attendee experience and this is reflected in our product



### Simple setup

Our intuitive dashboard is easy to use and we've got a suite of tools baked in to cut out the tedious admin



### Team training

We give you all the training and materials you need to successfully deploy our tech.



### Flexible support

We offer the right support – from pre-event pointers to on-site teams.



### Real-time data

We make sense of all the data and present it in a format that works for you.



### Revenue generation

We work with you to look for ways to generate revenue from using our tech.



### Delivery partner network

We work with select partners for provision of hardware, on-site staff and consumables for your events



### Flexible pricing

We charge a simple monthly fee based on which products you need and how much you use



---

**Please consider the environment before printing this - we like to keep it digital and make the planet happy.**

